

Stair Measurement Worksheet #1 - Open Stringer

Keuka Studios, Inc.
1011 Rush Henrietta Town Line Road
Rush, New York 14543

Phone: (585) 487-6148
Fax: (585) 487-6150
Email: Dan@Keuka-Studios.com

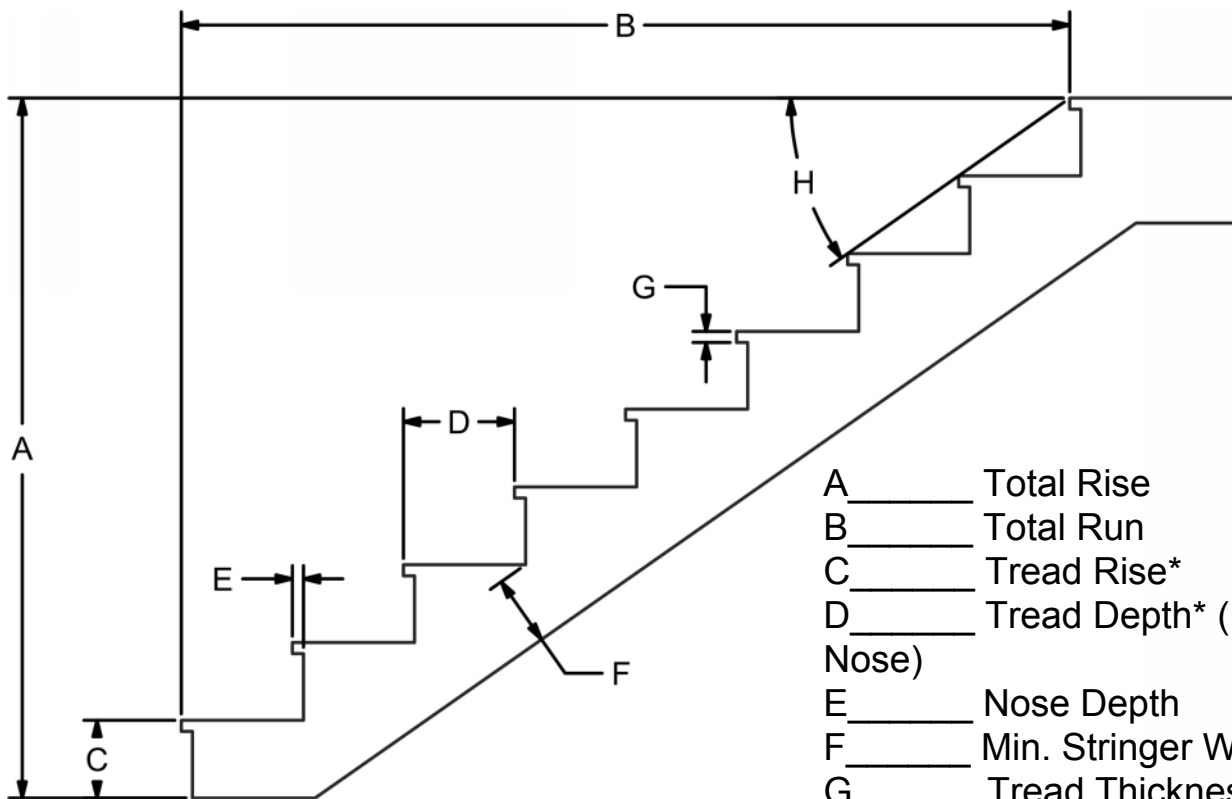
Customer Name _____

Phone Number _____

Email _____

Number of Rises _____

Stair Flight # _____



- A _____ Total Rise
- B _____ Total Run
- C _____ Tread Rise*
- D _____ Tread Depth* (Nose to Nose)
- E _____ Nose Depth
- F _____ Min. Stringer Width
- G _____ Tread Thickness
- H _____ Pitch or Angle*

Measurements: Very carefully measure the stair and fill in this form.

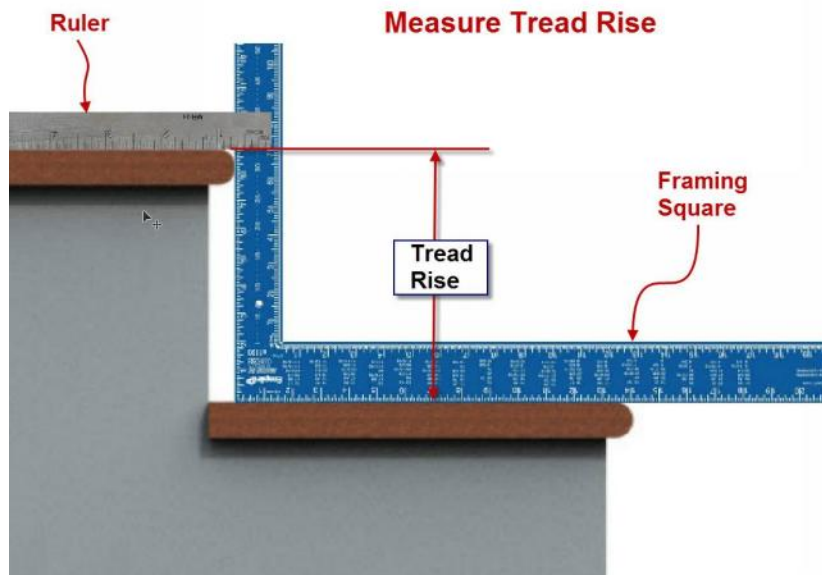
*Measurement C, D and H are the most critical to ensure proper railing fit. See measuring guidelines on the next page for help.

Photos: Photos of the site from numerous angles are required for use to get a better idea of the site conditions. These can be emailed to Dan@Keuka-Studios.com

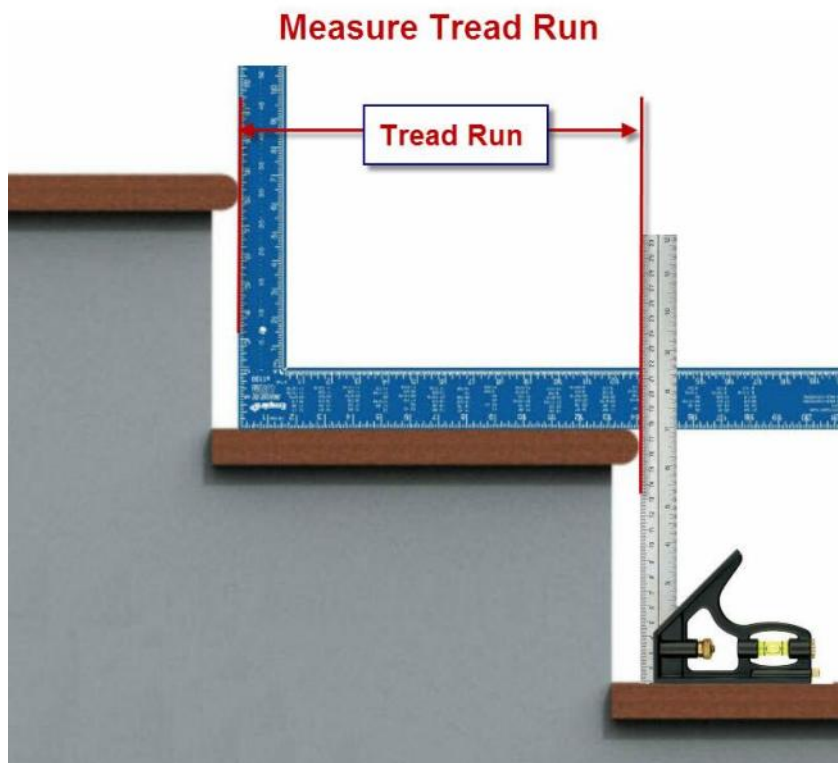
Stair Measurement - Guidelines

Measuring Stair Rise and Run: Measuring stairs is relatively easy if you follow the steps below. Measure these carefully. Errors in measurements are magnified (accumulate with each step). Often these measurements vary from tread to tread (especially at the top and bottom step).

Step 1. Use a framing square and a ruler or straightedge to determine the exact height of each tread rise. Record on attached chart for each tread. Start at the lower floor and work your way up.



Step 2. Using 2 squares determine the exact nose to nose run of each tread, record on the worksheet.



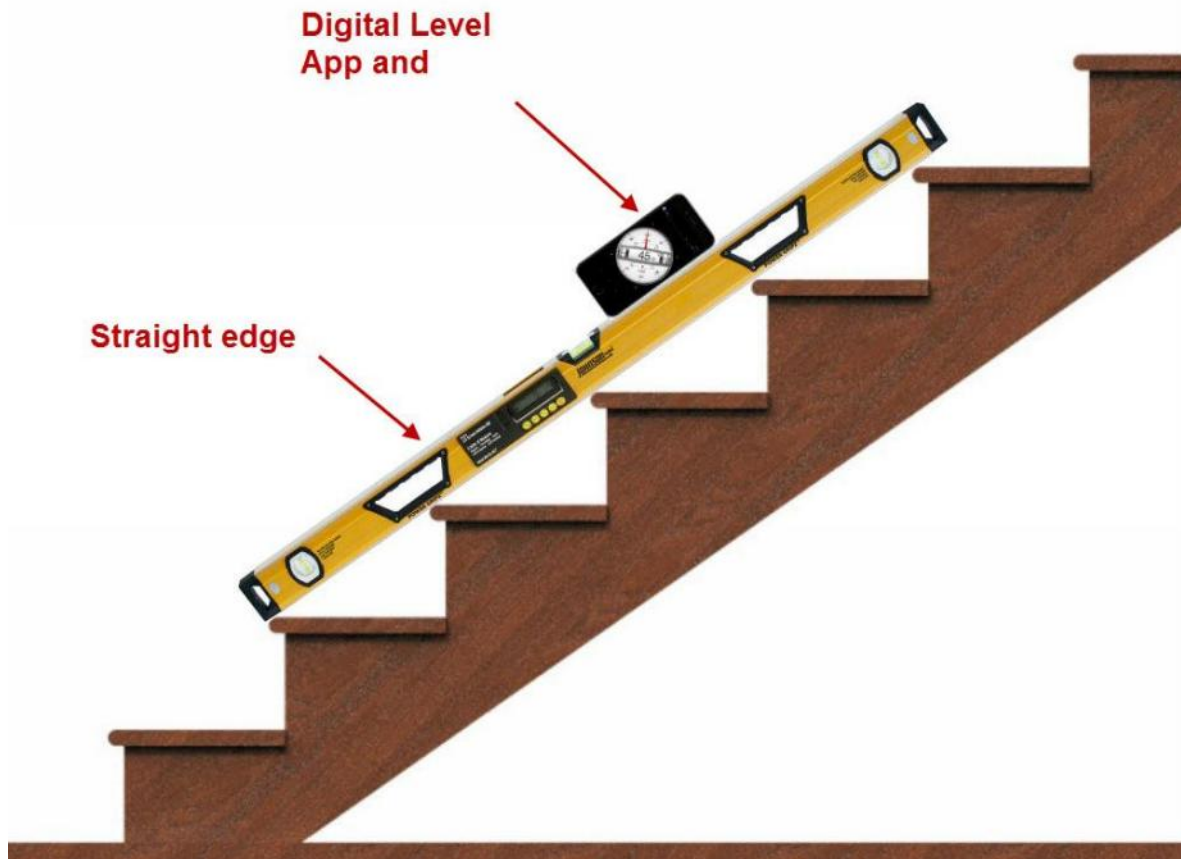
Method 2 - Digital Angle

An inexpensive and precise method for measuring stairs (and a great way to double check your measurements) is to use a digital level. Home depot sells them for about 35\$ or if you have a smart phone you can download a digital level app. See links below..

Android phones: <https://play.google.com/store/apps/details?id=com.plaincode.clinometer&hl=en>

Apple phones: <https://itunes.apple.com/us/app/clinometer-+-bubble-level/id286215117?mt=8>

Be sure to lay the digital level across a number of treads using a straight edge (very straight board or a long level). You will still need to supply us with a few tread rise measurements and the overall number of rises for this method to work.



KEUKA | STUDIOS

FINE ARCHITECTURAL METAL WORK

Stair rise and Run Measurements

Customer Name		
Flight Number		
Step Number	Rise	Run
16		
15		
14		
13		
12		
11		
10		
9		
8		
7		
6		
5		
4		
3		
2		
1		N/A Lower Floor

Expert Tip: Place a piece of blue painters tape on each step. Number each step starting at the lower floor. Measure all the rises first then go back and measure all the runs.