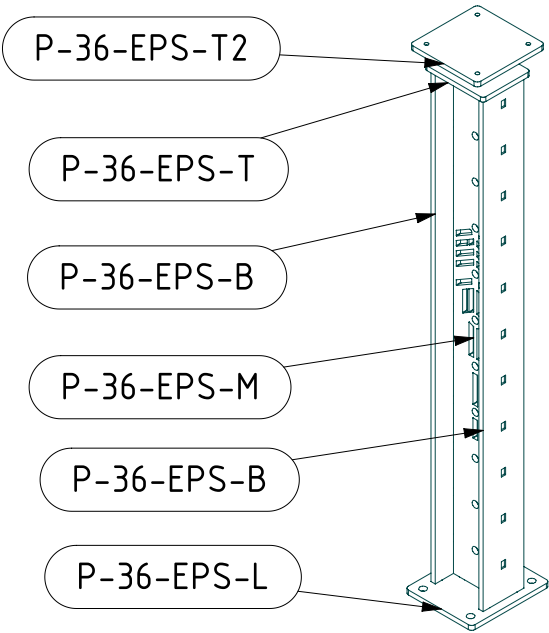
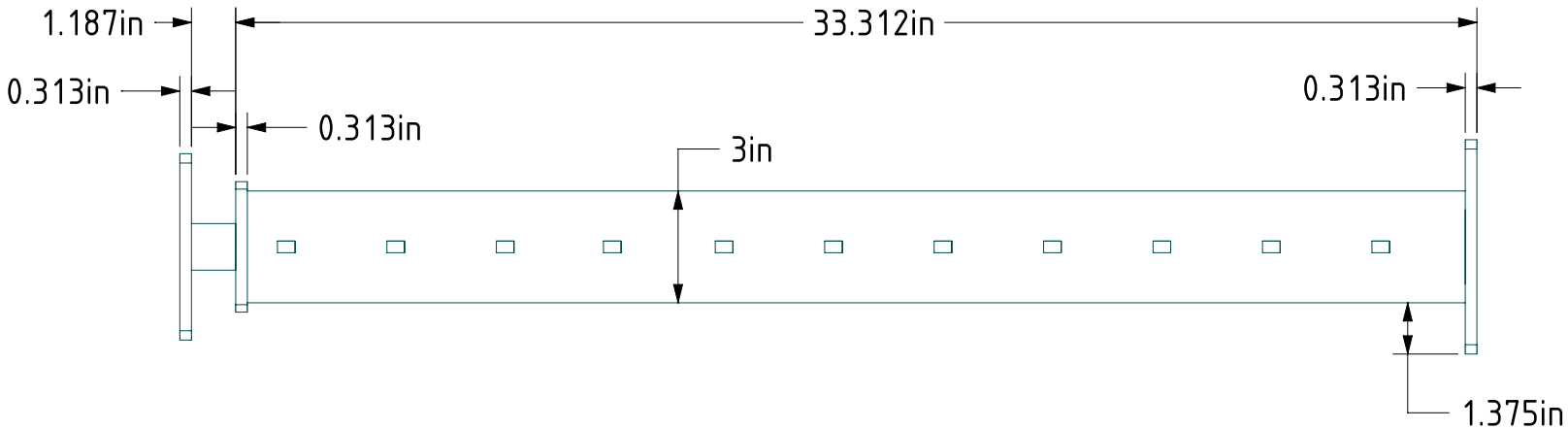
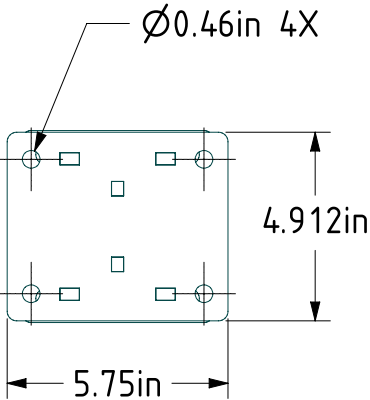
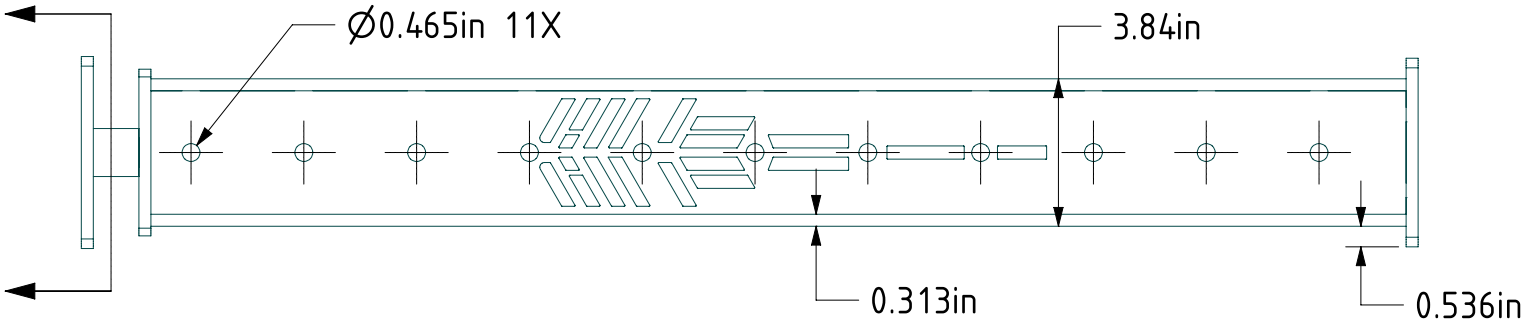
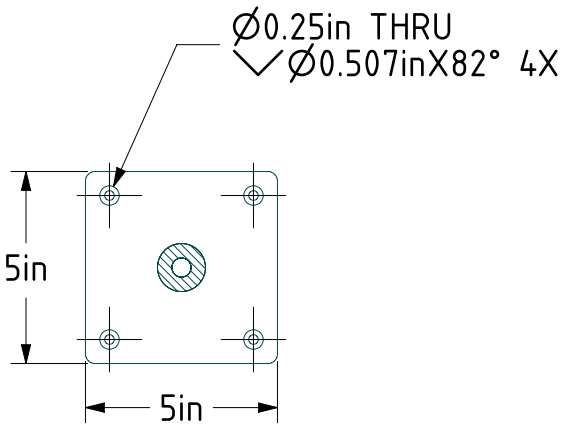


ITEM NO.	PART NUMBER	QTY
1	P-36-EPS-B	2
2	P-36-EPS-L	1
3	P-36-EPS-M	1
4	P-36-EPS-T	1
5	P-36-EPS-T2	1
6	Standoff	1



SCALE 1:10



NOTES:
 STANDARD MATERIAL & FINISH:
 - A-36 STEEL POWDER COATED

ADDITIONAL MATERIAL OPTIONS:
 - A-36 STEEL GALVINIZED
 - TYPE 304 STAINLESS STEEL
 - TYPE 316 STAINLESS STEEL

PROJECT: P-36-EPS		MATERIAL: SEE NOTE	
PART: P-36-EPS		FINISH: SEE NOTE	
DRAWN BY: JT		COLOR:	
DATE: 12/9/14	SCALE: 1:5	LOCATION:	
REVISION:	SIZE: B	QUANTITY:	
<div> <div> <div>KEUKA</div> <div>STUDIOS</div> </div> <div> FINE ARCHITECTURAL METAL WORK 1011 Rush Henrietta Towline Road Rush, NY 14543 P 1-856-454-5678 F 585-487-6150 www.keuka-studios.com </div> </div>			

COPYRIGHT © 2014 BY KEUKA STUDIOS INC. ALL RIGHTS RESERVED. THESE DOCUMENTS ARE THE PROPERTY OF KEUKA STUDIOS INC. NO DISTRIBUTION IS PERMITTED WITHOUT WRITTEN APPROVAL FROM KEUKA STUDIOS INC.