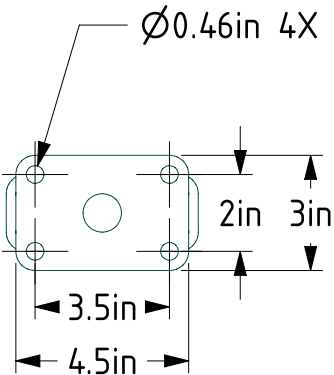
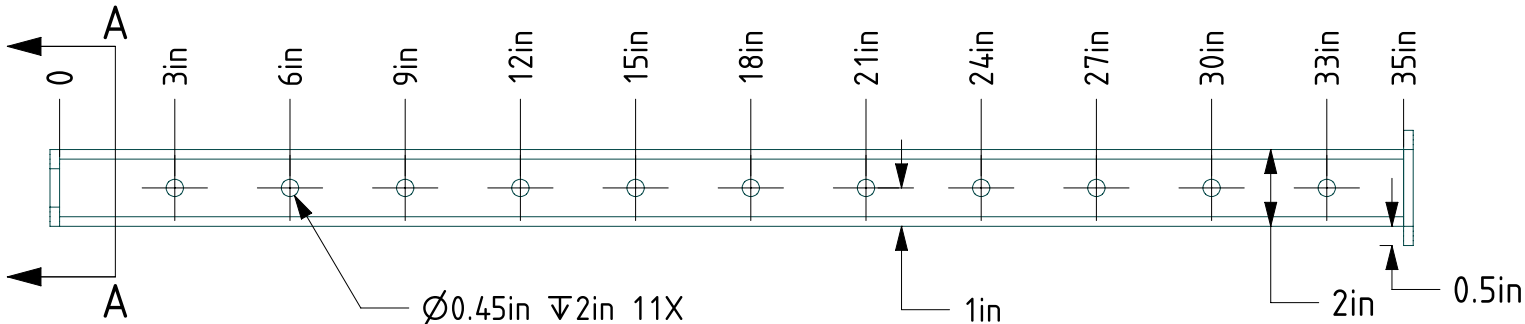
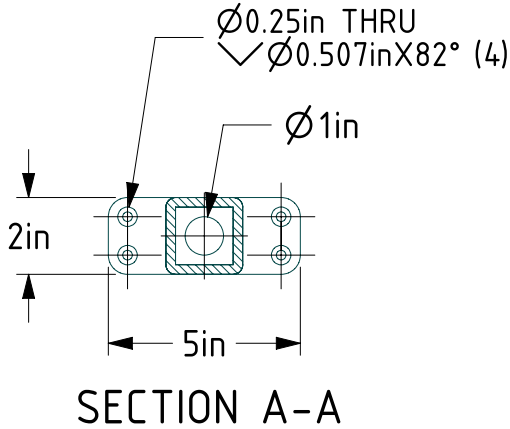
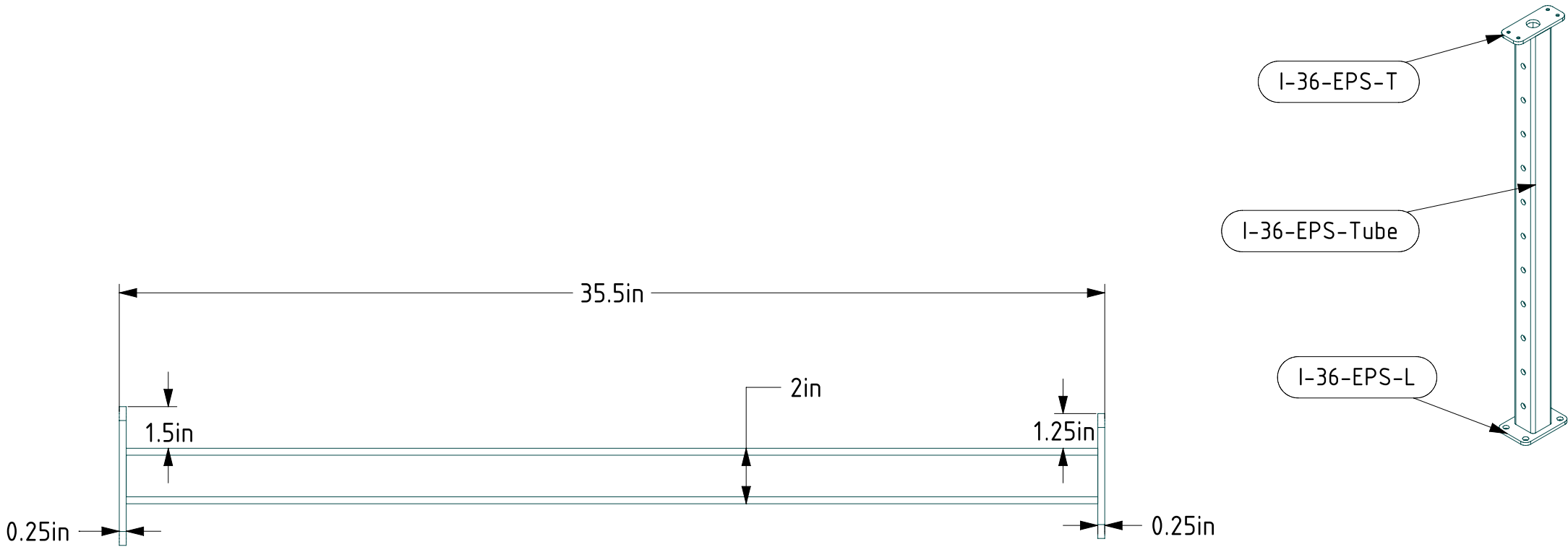


ITEM NO.	PART NUMBER	QTY
1	I-36-EPS-L	1
2	I-36-EPS-T	1
3	I-36-EPS-Tube	1



NOTES:
 STANDARD MATERIAL & FINISH:
 - A-36 STEEL POWDER COATED

ADDITIONAL MATERIAL OPTIONS:
 - A-36 STEEL GALVINIZED
 - TYPE 304 STAINLESS STEEL
 - TYPE 316 STAINLESS STEEL

PROJECT: I-36-EPS		MATERIAL: SEE NOTE
PART: I-36-EPS		FINISH: SEE NOTE
DRAWN BY: JT		COLOR:
DATE: 12/8/14	SCALE: 1:5	LOCATION:
REVISION:	SIZE: B	QUANTITY:

KEUKA

STUDIOS

FINE ARCHITECTURAL METAL WORK

1011 Rush Henrietta Townline Road
 Rush, NY 14543
 P 1-856-454-5678
 F 585-487-6150

www.keuka-studios.com

COPYRIGHT © 2014 BY KEUKA STUDIOS INC. ALL RIGHTS RESERVED. THESE DOCUMENTS ARE THE PROPERTY OF KEUKA STUDIOS INC. NO DISTRIBUTION IS PERMITTED WITHOUT WRITTEN APPROVAL FROM KEUKA STUDIOS INC.