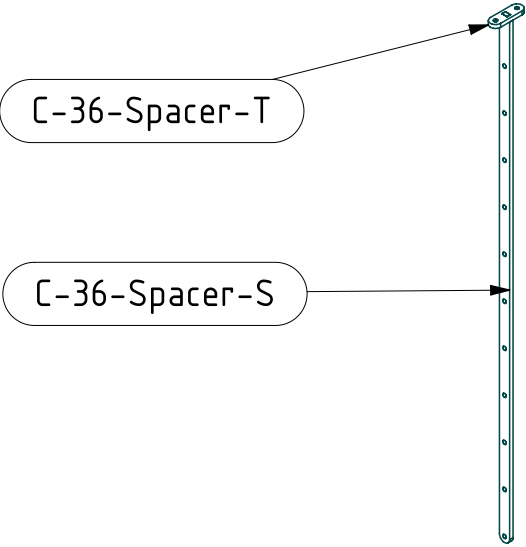
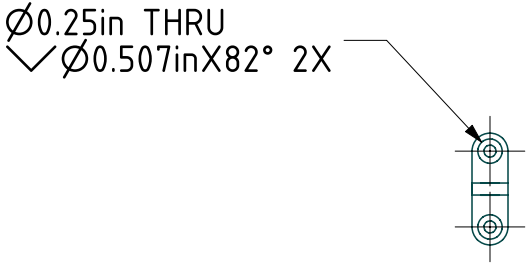
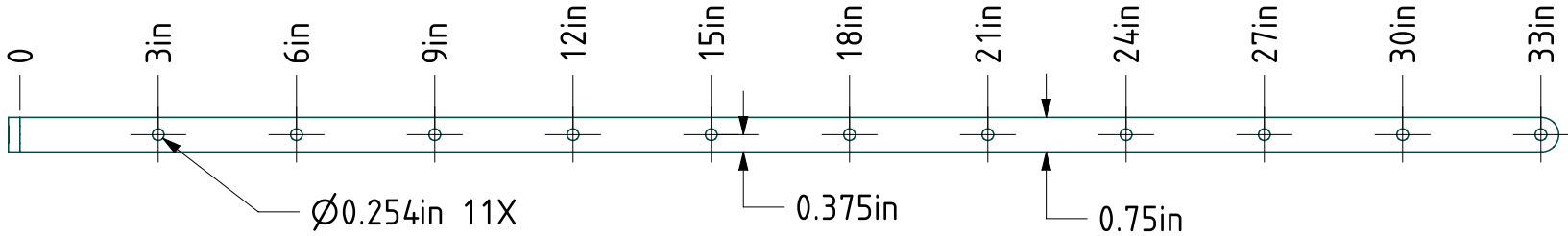
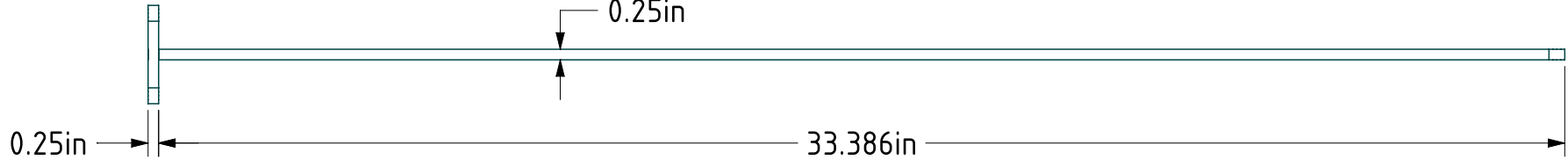


ITEM NO.	PART NUMBER	QTY
1	C-36-Spacer-S	1
2	C-36-Spacer-T	1



SCALE 1:10

NOTES:
STANDARD MATERIAL & FINISH:
- A-36 STEEL POWDER COATED

ADDITIONAL MATERIAL OPTIONS:
- A-36 STEEL GALVINIZED
- TYPE 304 STAINLESS STEEL
- TYPE 316 STAINLESS STEEL

PROJECT: SPACER-36		MATERIAL: SEE NOTE
PART: C-36-Spacer		FINISH: SEE NOTE
DRAWN BY: JT		COLOR:
DATE: 12/8/14	SCALE: 1:4	LOCATION:
REVISION:	SIZE: B	QUANTITY:
SHEET: 1		OF: 1

KEUKA STUDIOS

FINE ARCHITECTURAL METAL WORK

1011 Rush Henrietta Townline Road
Rush, NY 14543
P 1-855-454-5678
F 585-487-6150

www.keuka-studios.com