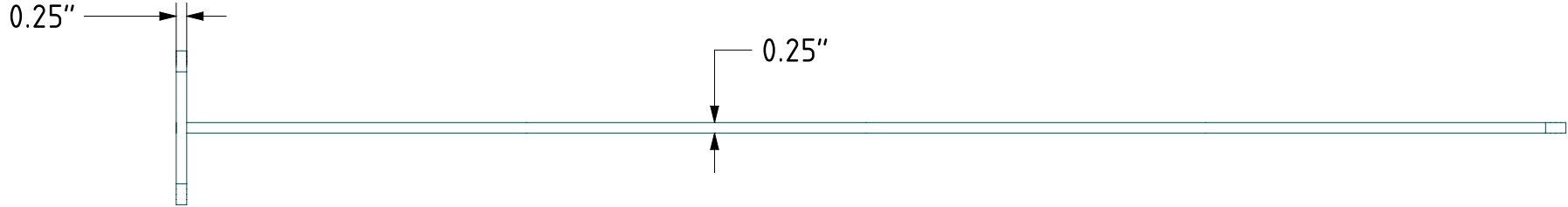
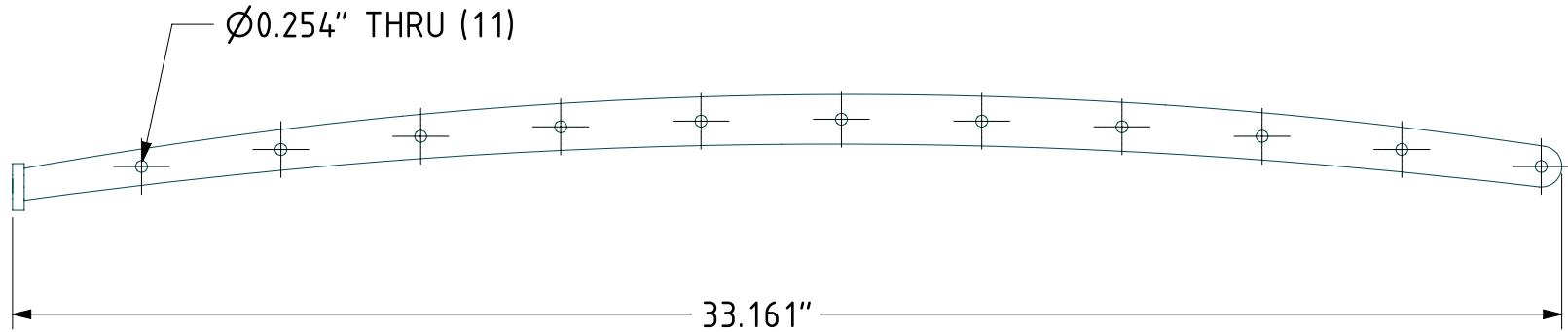
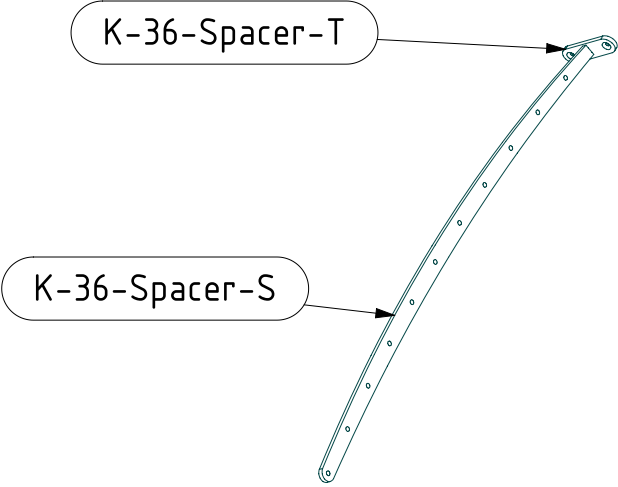


ITEM NO.	PART NUMBER	QTY
1	K-36-Spacer-S	1
2	K-36-Spacer-T	1

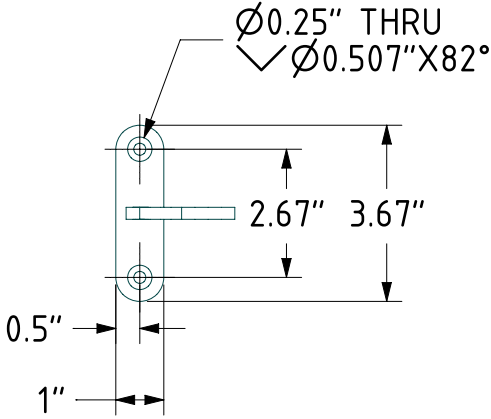


NOTES:
STANDARD MATERIAL & FINISH:
- A-36 STEEL POWDER COATED

ADDITIONAL MATERIAL OPTIONS:
- A-36 STEEL GALVINIZED
- TYPE 304 STAINLESS STEEL
- TYPE 316 STAINLESS STEEL



SCALE 1:10



PROJECT: K-36-SPACER		MATERIAL: SEE NOTE
PART: K-36-Spacer		FINISH: SEE NOTE
DRAWN BY:		COLOR:
DATE: 12/5/14		LOCATION:
REVISION: B		QUANTITY:
SHEET: 1		OF: 1

KEUKA STUDIOS

FINE ARCHITECTURAL METAL WORK

1011 Rush Henrietta Townline Road
Rush, NY 14543
P 1-856-454-5678
F 585-487-6150
www.keuka-studios.com

COPYRIGHT © 2014 BY KEUKA STUDIOS INC. ALL RIGHTS RESERVED. THESE DOCUMENTS ARE THE PROPERTY OF KEUKA STUDIOS INC. NO DISTRIBUTION IS PERMITTED WITHOUT WRITTEN APPROVAL FROM KEUKA STUDIOS INC.