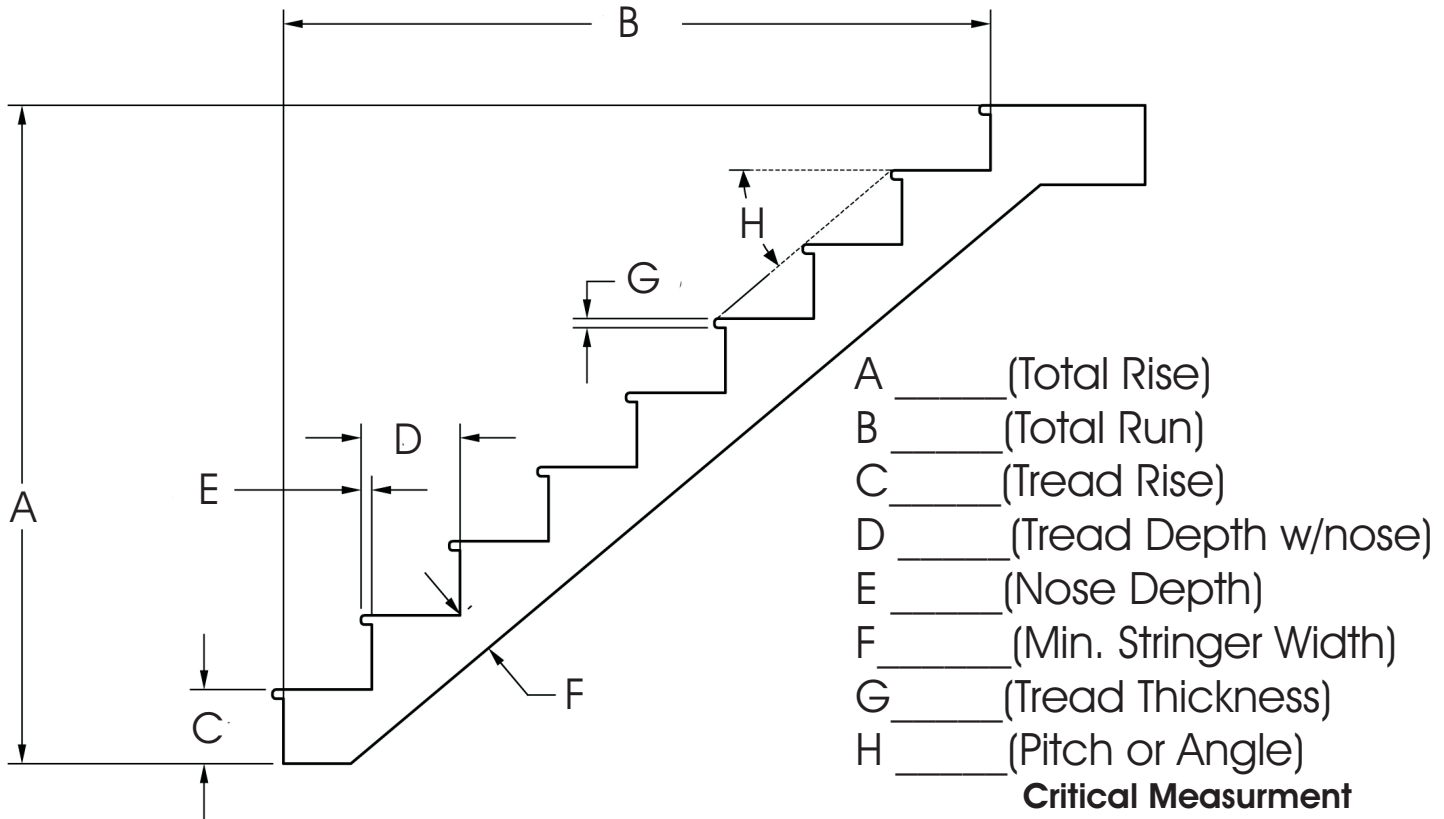


Stair Measurement Worksheet#1- Open Stringer

Keuka Studios, inc.
66 North Main Street
Honeoye Falls, New York 14472



Phone 585-624-5960
Fax to 585-624-3928
email: dan@keuka-studios.com



Instructions: Fax or Email the dimensions together with the Letter designation (example: A= 107 ½" B= 115")

-Measurements: Very carefully measure the stair and fill in this form. Angle measurement is critical to ensure proper railing fit. Please use a digital level to measure this. If you do not have one of these:

- 1: We can send you one.
- 2: they can be purchased inexpensively at Home Depot.



- Photos: Photos of the site from numerous angles are required for us to get a better idea of the site conditions. These can be e-mailed to dan@keuka-studios.com (no faxes please). For a large quantity of photos, you can CUTE Send It <http://www.cutesendit.com> (a free service). Or you can drop them in the mail to us.